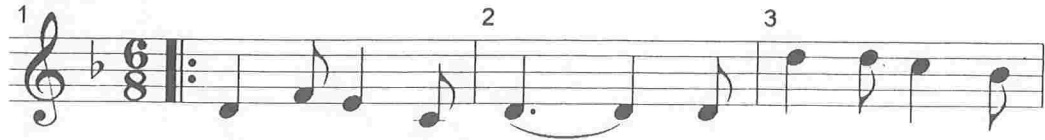


# Nou sé Pèp Bondyé

Mouvement de Valse

Texte et Musique: Patrick-Alexis PHANOR

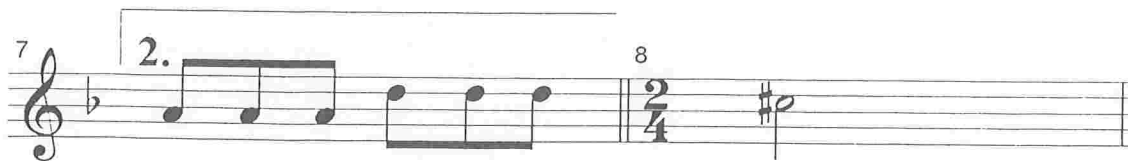
## Couplets



1. Nou sé pèp Bon - dyé.                   ba - ti an - dan sou -  
Nou sé pèp Bon - dyé,                   ba - ti an - ba fòs  
2. Nou sé pèp Bon - dyé.                   ba - ti an - lè fòs  
Nou sé pèp Bon - dyé,                   ba - ti an - ba jis-  
3. Nou sé pèp Bon - dyé.                   ba - ti an - lè La -  
Nou sé pèp Bon - dyé,                   ba - ti an - lè fòs



frans Kal - vè,                   pa ko - té d'lo é - pi san dé - vè - sé.  
les - Kla - vag,  
Lé - van - gil,                   sin la - pé ba len - res - tan pèp la.  
-tis Bon - dyé,  
-sous La - vi,                   la nou pé bwè san la - vi Jé - zi - kry  
Pen la - vi,



so - vé nan La - vi Jé - zi.  
zan - mi tou sa ki pi - ti.  
Tab ou - vè ba sa ki - lé.

# Nou sé pèp Bondyé

Texte et Musique :  
Patrick-Alexis PHANOR

## Refrain

An nou chan- té ba Gan Mèt la An nou lou-wan- jé Pa- pa la - vi

Rou- vè tchè nou ba Jé- zi rwa nou, An nou in- vo- tjé Les- pwi Sen.

An nou chan- té ba Gran Mèt la An nou lou-wan- jé Pa- pa la - vi

Rou- vè tchè nou ba Jé- zi rwa nou, An nou sé- lé - bré Bon dyé !

Musical notation system 1, measures 1-5. Treble clef, key signature of two flats (Bb, Eb), 4/4 time signature. The melody in the upper staff begins with a whole rest, followed by a quarter rest, then a quarter note G4, an eighth note F4, a quarter note E4, and a half note D4. The lower staff contains whole rests for all five measures.

Musical notation system 2, measures 6-10. Treble clef, key signature of two flats (Bb, Eb), 4/4 time signature. The melody in the upper staff starts with a half note G4, followed by a whole rest, a quarter rest, a quarter note E4, an eighth note D4, a quarter note C4, and a half note B3. The lower staff contains whole rests for all five measures.

Musical notation system 3, measures 11-15. Treble clef, key signature of two flats (Bb, Eb), 4/4 time signature. The melody in the upper staff begins with a quarter rest, followed by a quarter note G4, an eighth note F4, a quarter note E4, a quarter note D4, an eighth note C4, a quarter note B3, and a whole rest. The lower staff contains whole rests for all five measures.